



Your Touchstone Energy® Cooperative 

MAY 2026

## In this issue

- Wildfire mitigation
- Your co-op, your voice
- Projects update



*Romanyshyn*



*Braun*



*Zubke*



*Melchior*



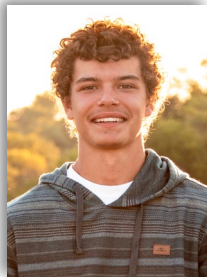
*Wanzek*



*Kuntz*



*Dohrmann*



*Schneider*



*Quinlivan*



*Maier*



*Krebs*

## EMPOWERING OUR FUTURE:

# Co-op awards scholarships

Every year, Roughrider Electric Cooperative powers the future by awarding scholarships to high school seniors within our service area. This initiative embodies our cooperative's unwavering commitment to community growth and celebrates the achievements of dependents of our members. By recognizing these students' outstanding accomplishments, we honor their drive, resilience and passion for their future.

This year, Roughrider Electric awarded 12 high school scholarships. Ten scholarships were given on behalf of Roughrider Electric to area seniors, while two scholarships were in partnership with Basin Electric Power Cooperative and West Dakota Diesel and Hydraulics. We are fortunate to have partners who are investing in the future of our members.

Additionally, at our Annual Meeting June 3 in Hazen, three \$1,000 Luck-of-the-Draw Scholarships will be awarded.

We wish this year's scholarship winners the best in their future academic aspirations.

This year's scholarship recipients are:

### **\$1,000 Area Scholarships**

Belfield High School – Samantha Romanyshyn  
 Beulah High School – Jonas Braun  
 Dickinson High School – Dawson Zubke  
 Dickinson Trinity High School – Coy Melchior  
 Hazen High School – Thomas Wanzek  
 Richardton-Taylor High School – Nolan Kuntz  
 Dickinson Hope Christian Academy – Christina Dohrmann  
 South Heart High School – Collin Schneider  
 Center-Stanton High School – Caiden Quinlivan

### **\$1,000 At-Large Scholarship**

New Salem-Altmont High School – Bailey Maier

### **\$2,500 Basin Electric Power Cooperative Scholarship**

Dickinson High School – Dawson Zubke

### **\$500 West Dakota Diesel and Hydraulics Scholarship**

New England High School – Bradley Krebs ■

## MANAGER'S MESSAGE: Wildfire mitigation and planning



**Travis Kupper**

Co-General Manager/  
CEO

Across the United States, the threat of wildfire has increased significantly in recent years. For electric utilities, the danger is all too real, as a power line contact can easily ignite dry vegetations, and high winds can accelerate the spread of wildfire.

As wildfire threats increase, electric cooperatives are creating detailed mitigation plans, which include strategic vegetation management, infrastructure and

equipment upgrades and sometimes public safety power shutoffs.

Safety is our top priority. We've trained our crews to respond quickly and safely during emergency situations, and we're closely coordinating with local fire departments and emergency managers. We're also using mapping technology and weather monitoring tools to stay ahead of changing conditions.

Electric cooperatives are also utilizing new and developing technologies to safeguard their local grids. Some technologies help reduce the risk of fire and minimize structural damage if a fire does ignite.

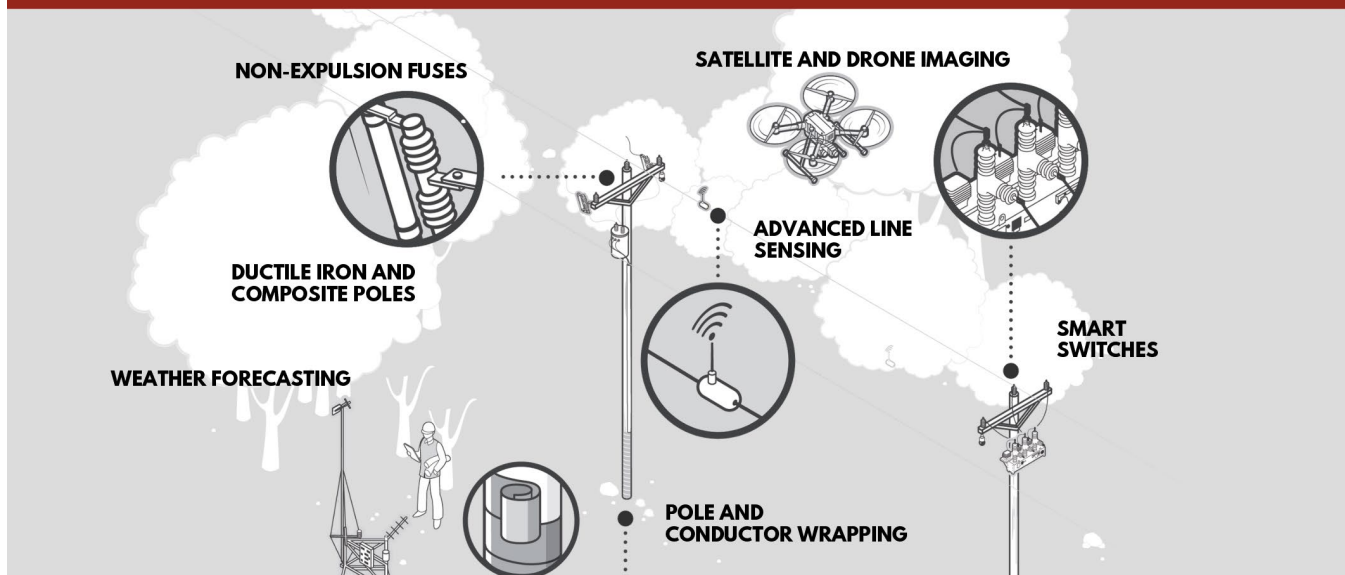
Our cooperative has been using advanced technology and specialized contractors to identify potential hotspots. We also employ infrared cameras at our substations to detect areas of abnormal heating before they become problems. In addition, our cooperative strategically deploys TripSaver and circuit reclosers during periods of elevated wildfire risk to enhance system protection and reduce the chance of a fire.

Roughrider Electric Cooperative was built on the values of reliability, service and community. By taking proactive steps today, we're working to ensure your power stays on and your family stays safe, no matter what challenges fire season may bring.

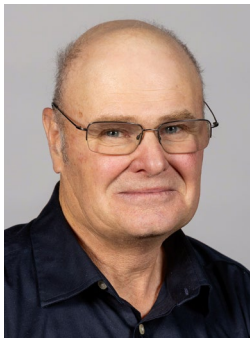
Thank you for your continued trust and support. ■



# FIRE MITIGATION TOOLS



# MESSAGE FROM THE BOARD: Your cooperative, your voice



**Greg Steckler**  
Board President

As your board of directors, one of our most important responsibilities is ensuring Roughrider Electric Cooperative remains strong, reliable and prepared for the future. Each year, the Annual Meeting gives us a chance to report to the members we serve. That's why your participation matters.

Unlike investor-owned utilities, our cooperative is guided by the people who use the power we provide.

Your voice helps shape priorities, such as investing in system reliability and making decisions that support the long-term health of our cooperative. The Annual Meeting is where those conversations happen openly and transparently.

At this year's meeting, you'll hear updates on the financial position of the cooperative and major projects underway, and learn about the challenges and opportunities ahead. You'll also have the chance to take part in the democratic process that sets cooperatives apart by electing directors, asking questions and helping guide the direction of the cooperative you own.

We also recognize not everyone can attend in person, which is why Roughrider Electric made participation easier than ever. This year, members can vote online or by mail-in ballot, giving you the flexibility to take part in cooperative governance in

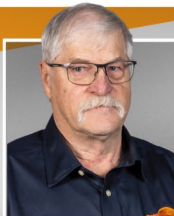
the way that works best for your schedule. Whether you cast your vote ahead of time or join us at the meeting, your participation plays an important role in shaping our cooperative's future.

I encourage you to attend, stay informed and stay engaged. Your involvement strengthens the cooperative and ensures we continue delivering safe, reliable, affordable electricity for generations to come. ■



## Join us on June 3 in Hazen for our Annual Meeting!

Members will soon receive an Annual Meeting packet in the mail with meeting details and voting instructions. Members whose email addresses are on file will also receive email instructions on how to vote. Below is a preview of the board of director candidates.



**WESTERN DISTRICT**  
Arnold Kainz,  
Dickinson



**CENTRAL DISTRICT**  
Chris Reindel,  
Dickinson



**CENTRAL DISTRICT**  
Greg Steckler,  
Dunn Center



**EASTERN DISTRICT**  
Dan Price,  
Hensler

## MESSAGE FROM OPERATIONS: Projects update



**Shawn Olson**

Chief of Staff/  
Operations Manager

As Roughrider Electric Cooperative crews begin to prepare for summer construction projects across the service area, we'd like to share about projects keeping our line crews busy. The mild weather has helped line crews advance various projects, such as infrastructure maintenance and planning for the summer construction season.

### Infrastructure maintenance

Annually, Roughrider Electric crews perform line patrol and pole testing. These initiatives are an inspection of cooperative infrastructure across the service area, which allows the cooperative to identify and preemptively make repairs before issues or power outages occur.

During line patrol and pole testing, notes are made if something needs maintenance or immediate assistance. Due to the mild weather, crews have been able to fix anything they find along the way. These items vary from broken, loose or missing hardware to

replacing power poles. This winter, line crews changed out over 300 power poles across the service area.

### Employee safety

Safety is a top priority at Roughrider Electric, so employees attend training sessions and weekly safety meetings. Additionally, cooperative employee equipment, such as personal protective equipment, insulated rubber gloves, hot sticks and other gear were inspected this spring along with bucket trucks which were maintained and tested. Inspections occur as needed or annually. Ensuring equipment line crews use every day is safe and reliable is a priority for the safety of employees and communities.

### Summer project preparation

Roughrider Electric's operations department continues to prepare for the summer construction season. The cooperative is ordering and receiving material as well as obtaining easements for scheduled projects outlined in the 2026 construction work plan.

As we continue to work across the service area, we encourage you to report any issues or safety concerns you may see on Roughrider Electric's infrastructure by calling the office. ■



Crews repair damage in the Medora area from a March wind storm.

## SAFETY STARTS WITH ME: Planting safety tips



**Conner Kuntz**

*Journeyman Lineworker*

Working in the rural electric industry, Roughrider Electric Cooperative employees understand the dangers and risks associated with the industry. During National Electrical Safety Month, we want to ensure you are aware of the risks and understand what you can do to prevent injuries and outages.

“Safety is a top priority at Roughrider Electric,” says Conner Kuntz, a journeyman lineworker. “We work hard to

do our part to keep our communities safely powered, but when it comes to electrical safety, everyone has a part to play.”

Here are a few key reminders to help keep you safe:

- **Look up and look out.** Always be aware of

overhead power lines when using ladders, moving grain augers or operating large equipment. Contact with power lines can be deadly.

- **Call before you dig.** Whether you’re installing a fence, planting trees or starting a new building project, contacting 811 before you dig can prevent accidentally hitting underground utilities.
- **Don’t approach or touch downed power lines.** If you see a downed power line, stay far away and report it to Roughrider Electric immediately. Never assume a line is dead, even after severe weather.
- **Use equipment safely.** Check cords, outlets and tools for damage before use. Replace frayed wires and never overload outlets, especially in older buildings or barns.

Roughrider Electric is committed to providing safe, reliable electric services, but electrical safety starts with each of us. Keeping these tips in mind, whether at home, in the shop or in a business, helps keep our communities safe and connected. ■

# WORK SAFELY ON THE FARM.

- Be aware of equipment clearance and don’t attempt to lift or move power lines.
- Do not stack items under power lines. Keep a 10-foot clearance.
- Call Roughrider Electric if you see electrical equipment that needs our attention.



# Unclaimed capital credits

The following list contains the names of current or former Roughrider Electric Cooperative members who had unclaimed capital credit checks mailed in December 2025.

These checks have either not been cashed or were returned to Roughrider Electric by the postal service, because it could not locate the members at the address on file. A further search by Roughrider Electric personnel has not found their whereabouts. If you know of the whereabouts of members on this list, please have them contact Roughrider Electric

at 800-748-5533. Please keep in mind not all of the capital credit amounts are large, but we would like to get these checks to the proper parties. Persons who wish to claim checks from the following list should be prepared to provide proper personal identification.

The names listed below are only a portion of Roughrider Electric's unclaimed capital credit list. The rest of the list will be published in the June *North Dakota Living* pages. Please note, these are unclaimed capital credits as of March.

AANDERUD, ALBERT  
AANDERUD, BRITTNEY  
ABC DIESEL INC.  
ABERNATHY, JASON  
ACKERMAN, MATT  
ACKERMAN, RON  
ADAMS, SHEENA  
AGUIRRE, ALEXIS  
AGUIRRE, JESUS  
AHMANN, KRISTEN  
AIRGAS ONSITE  
SAFETY SERVICES  
ALADDIN REALTY INC.  
ALBERS, CECELIA M.  
ALBERT, MELVIN  
ALCO STORES INC.  
ALICE, ENTZE TRUST  
ALLEN, LEON  
ALLTEL CORPORATE  
ALONZO, JOSE  
ALPERT, WILLIAM A.  
ESTATE  
ALVAREZ, ROBERTO  
ANC ENTERPRISES LLC  
ANDERSON, DAN  
ANDERSON, DARREN  
ANDERSON, DERIK  
ANDERSON, LYLE M.  
ANDERSON, MICHAEL  
ANDERSON, WAUGHN  
ANDERSON, VADE D.  
ANDRUS, MEREDITH  
ANTON, ARNOLD S.  
ANTON, ASHLEY  
APPEL, CHARLOTTE  
ARAGON, ROBERT  
ARCHER WIRELINE  
ARMBRUST, TIM  
ARNOLD, CHUCK  
ARNTSON, MARK  
ARRIOLA, CAROL  
ASH, BRIAN  
AT&T WIRELESS  
ATKINS, ELYSE  
AUEN, GEORGE C.  
AXTMAN, JORDAN  
AXTMAN, WAYNE M.  
BACH, SYLVIA B.  
BACKFISH, HILDA  
BADINGER, LILLIAN T.  
BADLANDS DIESEL  
SERVICE  
BALLENSKY, MARK  
BAMFORD, CALVIN L.

BANNER, TRANS LLC  
BANNISTER, JEFF  
BARGMANN, ALBERT  
ESTATE  
BASARABA, ELEANOR  
BASEFLUG, JESSICA M.  
BASIC ENERGY  
SERVICES LP  
BASSETT, SHERRIE  
BAUER, ESTHER L.  
BAUMANN,  
STEPHANIE  
BEA'S ATTIC  
BEARD, COREY  
BEAVERS, BEA  
BEEHLER, DENNIS  
BEILKE, CODY  
BELDEN, TODD  
BELFIELD AREA  
CHAMBER OF  
COMMERCE  
BELFIELD  
SPORTSMAN CLUB  
BELL, DOYLE  
BELL, GRADY  
BELTON, ERVIN  
BELTRAN, JORGE  
BENSON, CYNTHIA  
BENSON, WHITNEY  
BENZ, JOHN J.  
BERDAHL, ALBERT  
BERG, CARTER  
BERGER, CHRISTINE  
BERGER, CORY  
BERGER, DELORES  
BERGER, LAWRENCE  
BERGER, LOIS  
BERGER, PAULINE  
BERGER, RUSSELL  
BERGER, TIFFANIE  
BERGQUIST,  
JOHNATHON  
BERLAND, LARRY D.  
BERNICK, JOSHUA  
BERRY, CHARLIE  
BERTELSEN, NICHOLE  
BERTOLACCI, NICOLE  
BEST ASSETS  
BEST MOBILE HOME  
TRANSPORT  
BIEL, EMERY G.  
BIERMAN, RORY  
BIESIOT, VINCENT  
BIFFERT, BRUCE D.

BIG K HOMES INC.  
BILLINGSLEY, COLDON  
BINEK, TIM  
BINSTOCK, JUSTIN M.  
BINSTOCK, THEODORE  
BIO RESOURCES INC.  
BLACK, JIM  
BLACKLER, GEORGIA  
BNSF RAILWAY  
BODELL, RYAN  
BOERSMA, JUSTIN  
BOGNER, RYAN  
BOHN, NICOLE  
BOLDUE, PHILIP H.  
BOLEY, ROBERT  
BOLIN, MARK  
BOLSTAD, CLARENCE  
BOOTHE, CHERYL  
BORNEMANN, LARRY  
BORUP, SCOTT JR.  
BOWERS, TONI  
BOWMAN, TYLER DBA  
BOYER, CHARLOTTE J.  
BOYER, GREG  
BOYKO INC.  
BOZARTH, RONALD  
BRADLEY, GEOFFREY  
BRADLEY, RAMONA  
BRAUN, EMILIA  
BRAUN, ERNST  
BRAUN, JOHNNY L.  
BRAUNBERGER, ERIC  
BRAZDA, JEROME E.  
BRENLLA, JAMIE  
BRENTIN, KEVIN  
BRIERLY, ROBERT M.  
BRINSTER, LESLIE  
BRODHEAD,  
ROXANNE  
BROWN, BRITTANY  
BROWN, DANIELLE  
BROWN, LAURA  
BRUNER, MYRON  
BUCKINGHAM, JUSTIN  
BUCKMAN, JERALD L.  
BULLINGER, LYNN  
BURGESS, NATHAN C.  
BURIAN, TREVOR  
BURKLE, KORNARD E.  
BURMAN, SHEILA  
BURWICK, DALE  
BUSINESS AVIATION  
COURIER INC.  
BYLER, ABE

CAHOON, CELENA  
CALKINS, CRYSTAL  
CANTLON, LISA  
CARICO, RUSSELL  
CARLSON, JEFFREY  
CARMICHAEL, BRUCE  
CARROLL, DAVID  
CARTER, HAYLEY  
CASALE, SUSAN P.  
CASSEZZA, PATRICK A.  
CATCH THE BEAR  
HOEFS, SHANTEL  
CDI ENERGY SERVICES  
CHADBORN, JOAN C.  
CHASE, BETTE  
CHERNEY, JOHN  
CHUNG, GEORGE  
CIESLAK, DAN  
CLEMENT, SCOTT  
CLUB STAFFING INC.  
COFFIELD, STEVEN  
COFFIN, JEFF  
COFFMAN, CHRIS  
COLLOVA, PHILIP  
COLON, NIDIAN  
COMPTON, MICHAEL  
CONIGLIO, NICK  
CONITZ, EVELYN  
CONLON, MICHAEL  
COODY, JONATHAN  
COOK, DANA R.  
CORWIN, JEFF  
COUCH, TARA L.  
CRABB, TERRY M.  
CRAWFORD,  
FREEMAN  
CURRENCE, SARAH  
D'AMICO, PAULA  
D&D HARTMAN LAND  
TRUST  
DACAR, GAVIN  
DAHLEN, ANNA M.  
DAKOTA BUS SERVICE  
DAN'S BODY SHOP  
DANIELS, KITTY  
DASSINGER, RYAN  
DAVE TITUS  
EXCAVATING INC.  
DAVIS, DANIEL K.  
DAVIS, ROBBIE D.  
DAVIS, ROBIN L.  
DAVIS, SCOTT  
DAVIS, STEPHANIE J.  
DAVISON, AMBER

DE L MARMOLEJO A,  
MARIA  
DECKER, DONALD C.  
DECKER, DONALD M.  
DEHNE, GORDON  
DELZER, BRUCE A.  
DENNIS, DIXIE  
DERRY, DONA  
DESIGN 1 INC.  
DEVINE, JAMES  
DIAMOND B  
TRUCKING INC.  
DIAS, BEATRIZ  
RODRIGUES P.  
DICK, MERLYN  
DICKINSON  
COUNTRYHOUSE  
DICKINSON TRAP  
CLUB  
DICKON, ASHLEY  
DICUS, MARK  
DIETZ, TIFFANY  
DINIUS, JOHN JR.  
DITTEL, SCOTT  
DIXON, KYLE  
DNOW  
DOBLER  
CONSTRUCTION INC.  
DOEPKE, WYATT  
DOLAJAK, JOHN  
DOLAJAK, MIKE  
DOLECHEK,  
CELESTINE  
DOLECHEK, VINCENT  
DOLGHIER, SVETLANA  
DOLL, CALLEN K.  
DONE DEAL AUTO  
SALES  
DONOVAN B. &  
VIRGINIA P., BENZIE  
DOPPLER, TOM  
DORVAL, DELRAE D.  
DOTSON, TERRY  
DURBIN,  
CHRISTOPHER  
DURRANT, BEN  
DUTTENHEFER, BRAD  
DUTTENHEFER,  
DONALD J.  
DVORAK, JAHNA  
EARLE, RICHARD  
EAST WEIDNER BAY  
WATER ASSOC.  
EBERTS, MASON

ECKELBERG, TESSA  
 EDINGTON, RUSSELL  
 EDLAND, TRAVIS  
 EGGERS, JOSHUA  
 ELKINS, STEPHEN  
 ELLIS, JOHN W.  
 EMIG, MARGIE  
 EMMONS, PATRICK  
 ENDRESON, ROGER  
 ENG, CARLA D.  
 ENG, DELORES  
 ENGELBRETSON,  
 GARRET  
 ENGSTROM, LESLIE D.  
 ENO, CLAYTON  
 ENTZE, STACI  
 ERETH, LORIANA  
 ERHARDT, BRYAN J.  
 ERICKSON, AMY  
 ERMAN, JEFFREY  
 ETZOLD, BUD  
 EVANS, JOHN W.  
 EVERETT, JAMES L.  
 EVERGREEN  
 RETIREMENT INN  
 EVINGER, LINUS L.  
 EXTEND AMERICA INC.  
 EXTREME ENERGY  
 SERVICES LLC  
 F&L DEVELOPMENT  
 FAGEN, NATHAN  
 FAGERLAND, JEREMY  
 FAY, CONNIE  
 FEARS, MARSHALL  
 FEDDEMA, GRANT  
 FEININGER, FRANCIS  
 FEININGER, MITCH  
 FETSCH, JOSHUA  
 FICEK, HERMAN  
 FIRST COURT  
 FISCHER, LARRY JR.  
 FISHER, RYAN  
 FISK, RYAN  
 FITZGERALD, BOB  
 FITZSIMMONS, JOAN  
 FLOBERG, MICHAEL  
 FOERSTER, ANTHONY  
 FORMAN, ROD  
 FORSTER, STEPHEN  
 FOX, MARK J.  
 FOX, MICHAEL  
 FRAGER, TAM  
 FRED, KEEGAN  
 FREDERICKS,  
 COLEMAN  
 FREDERICKSON,  
 ALLAN  
 FREIDIG, ADAM  
 FRENZEL, BRANDON  
 FRETTEY, MICHAEL  
 FREY, RYAN  
 FRIDLEY, GUY  
 FRIEZE, LINDA  
 FRITEL, DUSTIN J.  
 FROELICH, JOE  
 FROELICH, VICTOR  
 FROHLICH, LAURIE  
 FUENTES, HALEY  
 GABEL, JAY  
 GALINDO,  
 GUADALUPE  
 GANEA, VICTORIA  
 GANSKE, DANIEL  
 GARRISON, NATHAN L.

GARS LANDSCAPING  
 GARTNER, SHEILA  
 GATES, CORY  
 GEHRING, BRIAN  
 GEHRING, KARLENE  
 GEISNER, DOUG  
 GEMMELL, KATHY  
 GENTLE, TANIS  
 GENZEL, BRAD  
 GERBIG, AARON  
 GERMANN, MIKE  
 GIAMANCO, DAWN  
 GIBSON, RACHEL  
 GILBERTSON, RUSSELL  
 GLASS, WENDY  
 GLINZ BBQ LLC  
 GLOBSTAD, CORIN  
 GLOBSTAD, HARRY S.  
 GOETZ, STUART  
 GOLBERG, GERALD  
 AND BETTY  
 GOLDEN FIELD  
 SERVICES INC.  
 GRAHAM, CARL  
 GRANDOIS, JASON  
 GRATTON, MARJORIE  
 GREAT PLAINS  
 TOWERS  
 GREEN, CLARENCE L.  
 GREENSLIT, MATT  
 GRESS, KARI L. ESTATE  
 GRIFFIN, B.S.  
 GRIGGS, DORIS R.  
 ESTATE  
 GROLLINGER, KAT D.  
 GROVE, JESSICA  
 GROWERS UNLIMITED  
 GRUENEICH, BRAD  
 GRUENEICH, J.W.  
 GRUMAN, KARLA  
 CUENTHER, CLARICE  
 GUSTAFSON, JERRETT  
 GUTKNECHT, GERALD  
 GUTTORMSON, CHAD  
 H&S PROPERTIES  
 HAAG, IRENE  
 HAFNER, JAMES  
 HAGEMEISTER,  
 MARVIN  
 HAGEN, ERIC  
 HAINES  
 CONSTRUCTION  
 HALVORSON, CEDRIC  
 HALVORSON,  
 KENNETH ESTATE  
 HAMBACH, TIMOTHY  
 HAMM & PHILLIPS  
 SERVICE CO. INC.  
 HANEY, TRAVIS P.  
 HANSON HOT OIL  
 SERVICE CO.  
 HANSONL, BRENDA  
 HATZENBILER, CHRIST  
 HATZENBUHLER,  
 JACOB  
 HATZENBUHLER,  
 JOSEPH  
 HAUCK, BREEANN  
 HAUCK, TRACEY L.  
 HAUGEN, CHRIS  
 HAVEN, SARITA  
 HAZEN, BRENDA  
 HEART, VALERIE  
 HECKER, JACOB

HECKER, MYRON  
 HEDRICK, CONNIE  
 HEGEL, ADAM  
 HEID, CHANCE  
 HEIDRICH, DAVE  
 HEIDT, CASEY  
 HEISER, LARRY  
 HELDE, JASON  
 HELENA AGRI-  
 ENTERPRISES LLC  
 HELGESON, BOBBI JO  
 HEMMELMAN, SCOTT  
 HENKE, MARY  
 HENRY, KENYA  
 HERMAN, DELILAH  
 HERRING, HEATH  
 HIBL, JEROME M.  
 HICKEL, COURTNEY  
 HICKS, BRANDON  
 HICKS, JASON  
 HICKS, JOE  
 HIGH PLAINS INC.  
 HINTZ, IRIS  
 HINTZ, MICHAEL  
 HLEBECHUK, MELISSA  
 DBA BULLY CAFE  
 HLIBICHUK, JAMES  
 HOEHN, HAROLD  
 HOEPFNER, LEO  
 HOERNER, MICHAEL  
 HOFF, JOSEPH  
 HOFF, LACEY  
 HOGAN, JAMES  
 HOLDEN, CHERI  
 HOLDEN, SCOTT  
 HOLLAND, JASON  
 HOME TOWN INC.  
 HOMECORP  
 RELOCATION INC.  
 HOMESTEAD ACRES  
 HOPPEN, DANIELLE  
 HORN, SCOTT  
 HORSENOSE BUTTE  
 HORT, RUSSELL  
 HOWE, MARGARET  
 HUBER, BRUCE  
 HUDSON, GLENN W.  
 HUGHES  
 CHRISTENSEN INC.  
 HURLEY, KELLIE E.  
 HURLEY, VESS E.  
 INGMAN, MARVIN S.  
 INGMAN, MARY  
 ISAAK, RONALD  
 ITRICH, W.D.  
 IVERSON, CHRIS  
 J.H. DANIELS &  
 ASSOCIATES  
 JACKSON, MARK A.  
 JACOBS, GEORGE  
 JAMES, JAY  
 JAMES, LORETTA  
 JARRETT, JEFF  
 JEFFERSON, CORY  
 JEFFREY, MARK  
 JEIDE, TRACEY  
 JEPSON, JEREMY  
 JESPERSON, DEVON  
 JESSEN, DEREK  
 JILEK, JESSICA J.  
 JILEK, ANTON J.  
 ESTATE  
 JOHNS, ALESHA  
 JOHNSEN, RICHARD

JOHNSON, CHRIS  
 JOHNSON, CLAYTON J.  
 JOHNSON, DALE M.  
 JOHNSON, JEREMY  
 JOHNSON, JODI  
 JOHNSON, JONATHAN  
 JOHNSON, LACEY  
 JOHNSON, NANCY  
 JONES, DANIEL C.  
 JONES, RYAN P.  
 JONES, VERA  
 JORDAN, CINDY  
 JUELFS, JENNIFER  
 JUST, WARREN A.  
 KADRMAS, ANGELA  
 KADRMAS, KENNETH  
 KADRMAS, TERRY  
 KAELBERER, CHRIS C.  
 KAISERSHOT,  
 GORDON  
 KARPYAK, ADAM  
 KATHREIN, MELANIE J.  
 KATJATAKO, JOHNSON  
 KAUFMAN, LANCE  
 KEADLE, DANETTE  
 KECK, JAMES  
 KECK, TANYA  
 KEENER, KYLE  
 KEITH, ANDREW  
 KELLER, KENNY  
 KELLY INVESTMENTS  
 KELNER, ERIC  
 KELSCH, LENA  
 KENNEDY, TAYLER  
 KENNER, LUKE  
 KHANNANOV, VADIM  
 KINNEY, SUMMER  
 KINNEY, TOM  
 KINNISCHTZKE,  
 NORBERT  
 KIRKSEY, JENNA R.  
 KLEE, PATRICK N.  
 KLEIN, JOE  
 KLEIN, JUSTIN  
 KLEIN, SHAWN  
 KLINE, HEATHER  
 KNELL, LYLE  
 KNOLL, JOE  
 KNOPIK, MATTHEW  
 KNUTSON, BRYON  
 KNUTSON, DEAN  
 KNUTSON, TAVI  
 KOCH CONSTRUCTION  
 KOEHLER, GARY  
 KOENIG, KODI  
 KOLLING, MARIA  
 KOLTISOV, SERGEY  
 KOSTELECKY, DANIEL  
 KOSTELECKY, JERRY E.  
 KOSTELECKY, MARTHA  
 KOUBA, JOEL  
 KOVALOFF, ROBERT  
 KOVARIK, LORETTA  
 KOVASH, HEATHER  
 KRAFT, ELDEN A. JR.  
 KRAFT, KASPER  
 KRAGNESS, STEVE  
 KRB ENTERPRISES  
 KRUEGER, AGNES  
 KUBAL, JESSICA  
 KUBAS, ERIN  
 KUBAS, CLARION A.  
 ESTATE  
 KUBISCHTA, CONNIE

KUDRNA, EDWIN  
 KUHR TRUCKING LLC  
 KUKUK, ALLEN K.  
 KUNTZ, JENNA K.  
 KUNTZ, JOE  
 KUNTZ, JON  
 KUNTZ, KRISSY  
 KUROWSKI, JAMES  
 LABORICO, ROCHELLE  
 LADWIG, JENNIFER  
 LAKE SAKAKAWEA  
 EST. WATER USERS  
 LAKODUK, DAVE  
 LARSON, EDWARD L.  
 LARSON, SCOTT  
 LAUF, ELMER  
 LAUF, LUCILLE  
 LAUFER, MICHAEL  
 LECHLER, BRYAN  
 LEE, HEIDI  
 LEE, KIMBERLY M.  
 LEHMANN, AMANDA  
 LEIER, KATIE  
 LEINGANG, ELIZABETH  
 LEJEUNE, CHARLESA  
 LEONARD, MINDY  
 LETZ, BRENDA  
 LEVY, LONNIE  
 LEWIS, MARLON  
 LEWIS, ROSS  
 LEWIS, SUZANNE  
 LEWTON, DAVE  
 LIDSTROM, JOLEEN  
 LIFFRIG, MICHAEL  
 LINCOLN, ASHLEY  
 LINDVIG, STEVEN  
 LINK, GREG  
 LINN, DELORES J.  
 LITSEY, BETTY A.  
 LITTLE KNIFE RIVER  
 BULL RANCH  
 LITTLE SOLDIER, COBY  
 LOEB, SHAWN  
 LOFFELMACHER,  
 VIRGINIA  
 LOH, LORRAINE  
 LOKEN, CHRISTA  
 LOKEN, COLLIN  
 LONGMUIR, CHANDA  
 LONGMUIR, TRAVIS  
 LOTHSPREICH, JOE  
 LOUIS, DEAN  
 LOVE, WILLIAM T.  
 LOWRY, TIMOTHY  
 LUBKEN, SARAH  
 LUCKY, DALE M.  
 LUFKIN INDUSTRIES  
 LUKACH, VERONICA  
 LUNDBERG, NOELLE  
 LUNDEEN, JOSH  
 LUTZ, BRADLEY J.  
 LUTZ, DURAND G.  
 MAAS, CODY  
 MAAS, DALLAS D.  
 MAAS, DALLAS J.  
 MADDOCK, GAIL  
 MADZO, COLIN  
 MAGNUSON, MICHELE  
 MAHTO, WAYNE  
 MAIER, GLORIA  
 MAIN, MICHAEL  
 MAIXNER, BEN  
 MANER, ALFORD  
 MANHATTAN OIL INC.

## Roughrider Electric board meeting highlights Feb. 27

The meeting of the board of directors of Roughrider Electric Cooperative was held on Feb. 27 at Roughrider Electric's Hazen office. The meeting was called to order at 10:02 a.m. CT. A quorum was present. Also attending were co-General Managers/CEOs Travis Kupper and Jason Bentz, CFO Alex Craigmile, Chief of Staff/Operations Manager Shawn Olson, Legal Counsel Jennifer Grosz and Board Liaison Connie Hill. Member Services Manager Larissa Eslinger attended portions of the meeting.

**Consent agenda:** The consent agenda was approved as proposed.

**Strategic items:** Bentz and Kupper presented the co-general managers' report, which included updates on upcoming projects, legislative session topics discussed at a district managers meeting, grant fund requests and other meetings. Basin Electric Power Cooperative reports were available for review.

**Department reports:** Craigmile provided a financial report, with a review of the January financials,

operating revenue and key ratios. He noted the audit is underway. Olson provided an operations report, which included a staffing update, outage reports, status of construction projects and other items. Eslinger provided a member services report, which included Nominating Committee updates, youth programs and the member satisfaction survey. Chief Information Officer Charlie Dunbar provided a written report. Grosz provided an update on the status on legal topics and projects, including easements and policies.

**Action items:** The board reviewed and resolved a proposed contract.

**Discussion/general information:** The board discussed the updated wildfire mitigation plan and capital credit retirements.

The meeting concluded with adjournment. Secretary Troy Sailer certified the accuracy of the minutes.

**Next meeting date:** The next meeting is at 9 a.m. MT on May 29 in Dickinson. ■



[www.roughriderelectric.com](http://www.roughriderelectric.com)

### HAZEN OFFICE

701-748-2293 or 800-748-5533  
800 Highway Dr., Hazen, ND 58545  
7:00 a.m. - 3:30 p.m. CT Monday-Friday

Payments may be deposited in the deposit box by Roughrider Electric's main office entrance or in the drop boxes located at Krause's Super Valu in Hazen or Bronson's Super Valu in Beulah.

### DICKINSON OFFICE

701-483-5111 or 800-748-5533  
P.O. Box 1038, 2156 4th Ave. E.  
Dickinson, ND 58602  
7 a.m. - 4 p.m. MT Monday-Friday

Payments may be deposited in the deposit box west of Roughrider Electric's main office entrance or the west and south locations of Family Fare supermarkets.

### OFFICERS AND DIRECTORS

Greg Steckler, President, Dunn Center..... 548-8122  
Roger Kudrna, Vice President, Dickinson..... 483-8377  
Troy Sailer, Secretary, Golden Valley ..... 948-2427  
Bruce Darcy, Treasurer, Golden Valley ..... 983-4222  
Jesse Flath, Hazen ..... 880-0386  
Darell Herman, Beulah ..... 873-4371  
Arnold Kainz, Dickinson ..... 483-8207  
Dan Price, Hensler ..... 794-3779  
Callen Schoch, New England ..... 290-3836

### MANAGEMENT

Travis Kupper..... Co-GM/CEO  
Jason Bentz..... Co-GM/CEO



## Discounts offered for Medora vacation

Roughrider Electric Cooperative is able to offer its members a discount by being a Touchstone Energy® member. Simply call 1-800-MEDORA-1 and give the discount code of "TOUCH2026" for a 15% discount on all of the following during any night of the season.

- Medora Musical
- Pitchfork steak fondue
- Bully Pulpit Golf Course
- Gospel Bruch tickets
- Old Town Hall Theater shows

### LODGING AT ANY OF THE FOLLOWING:

- Elkhorn Quarters
- Badlands Motel
- Rough Riders Hotel
- Hotel 1883



The code is good for reservations over the phone, website or in person. A green fees discount will be applied at check-in for a tee time at the golf course.



Become a fan of Roughrider Electric Cooperative to learn timely co-op news!

[facebook.com/RoughriderElectric](https://facebook.com/RoughriderElectric)